

PARTS LIST
WPT150
Electronic Typewriter

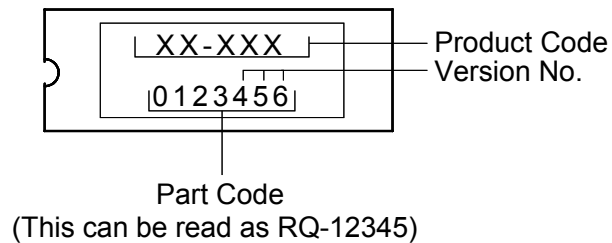
EDITION 2
NOV. 2004
001-03154-02

PREFACE

1. This parts list is used to order parts required for the electronic typewriter.
2. The part code for the ROM including version number is printed on the protection label as illustrated below.

Be sure to use same part code for compatibility when ordering parts.

Example:



3. The Classified mark is printed on the control PCB as illustrated below.
- Be sure to use the same classified mark for compatibility when ordering parts.

Example:

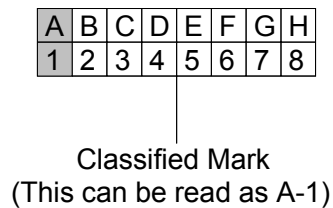
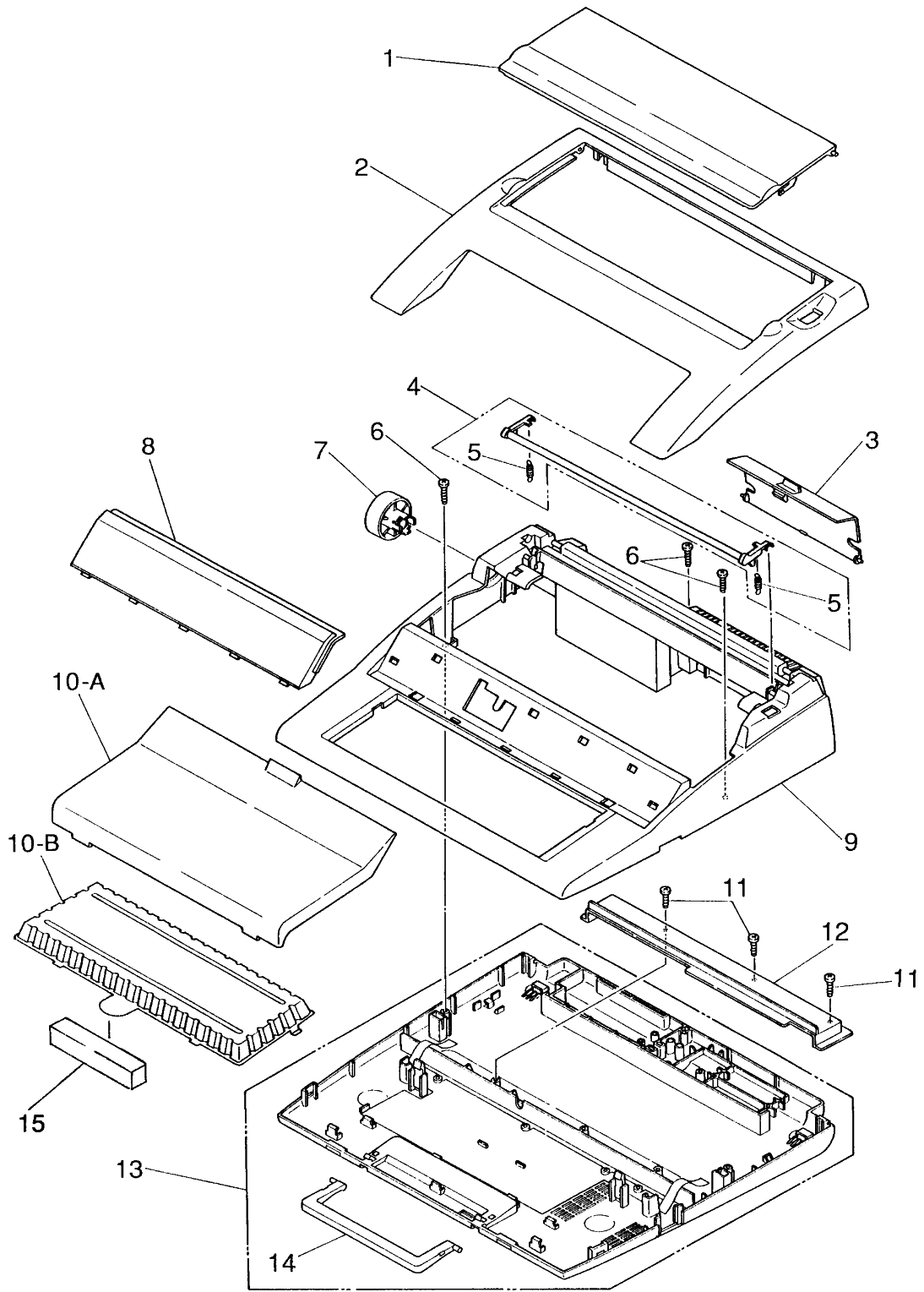


TABLE OF CONTENTS

HOUSING	1
KEYBOARD	3
PLATEN	5
LF AND CARRIER DRIVE	7
CASSETTE BASE AND RIBBON DRIVE	9
SELECTION AND HAMMER	11
ACCESSORIES	13
POWER SUPPLY	15
CONTROL PCB (MASK CPU MODELS)	17
PACKING	23



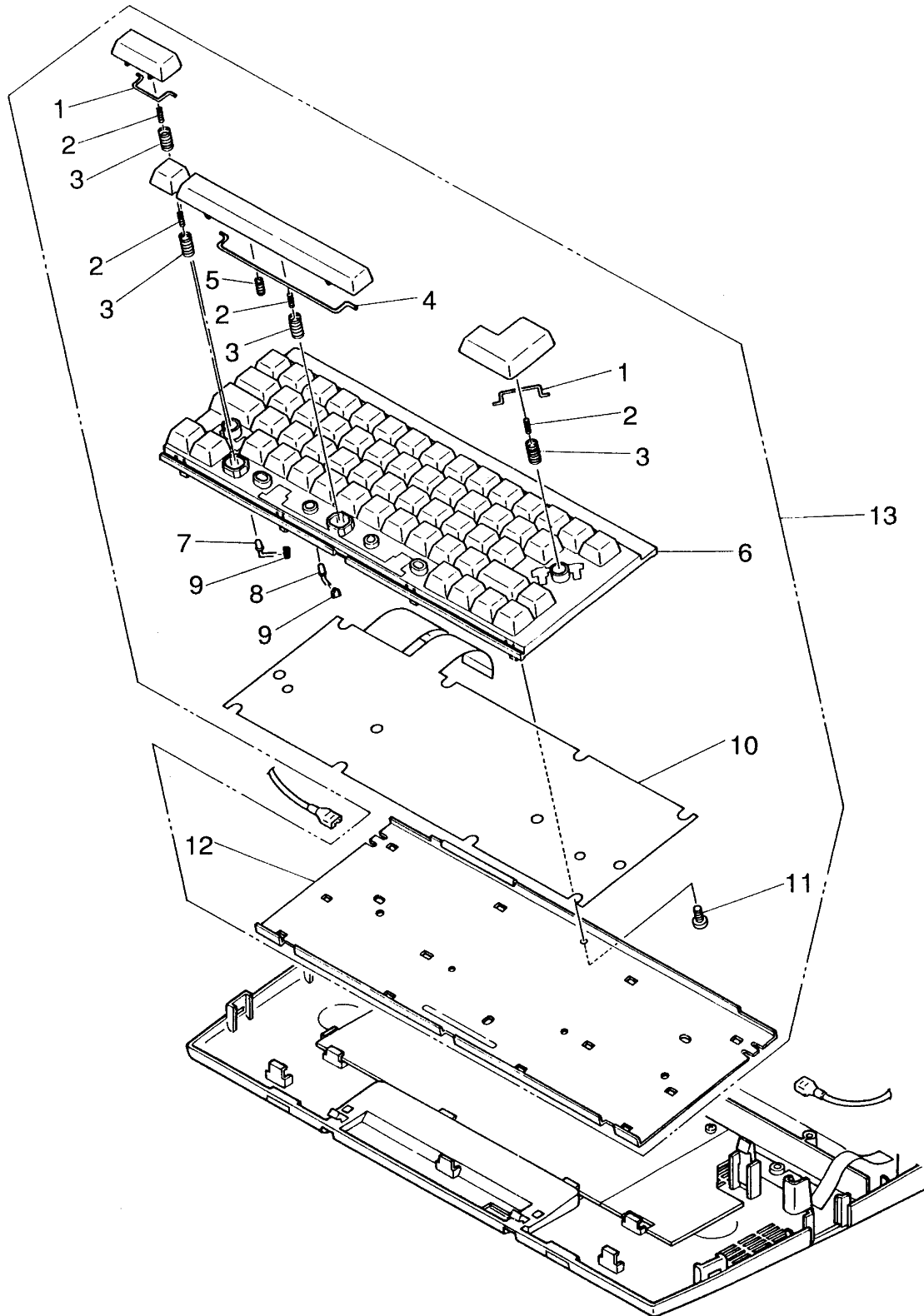
**FUNCTIONAL
GROUP NAME**

HOUSING

MODEL

WPT150

REF. NO.	PART CODE	Q'TY	DESCRIPTION
1	150-71520-44	1	PAPER STAND
2	150-95060-44	1	TOP COVER
3	150-71580-44	1	CORD COVER
4	150-70120	1	PAPER BAIL ASSEMBLY
5	100-72110	2	PAPER BAIL SPRING
6	200-71060	3	SCREW M3.0 X 16
7	150-71540-45	1	PLATEN KNOB
8	150-94210	1	CENTER COVER (ENGLISH)
	150-94240	1	CENTER COVER (FRENCH)
9	150-71110-44	1	MAIN CABINET
10-A	150-71530-44	1	KEYBOARD COVER
10-B	150-81030	1	FRONT PACKING
11	200-71040	3	SCREW M3.0 X 10
12	150-70591-44	1	PCB COVER (ORIGINAL PART)
	150-70591-33	1	PCB COVER (TEMPORARY PART)
13	150-71300-22	1	BOTTOM CABINET ASSEMBLY
FOR 13	001-21667	1	LABEL (120V)
	001-21014	1	LABEL (120V:FCC)
	001-20912	1	LABEL (120V:WARNING)
14	150-71320-44	1	HANDLE
15	150-81050	1	KEYBOARD HOLDER



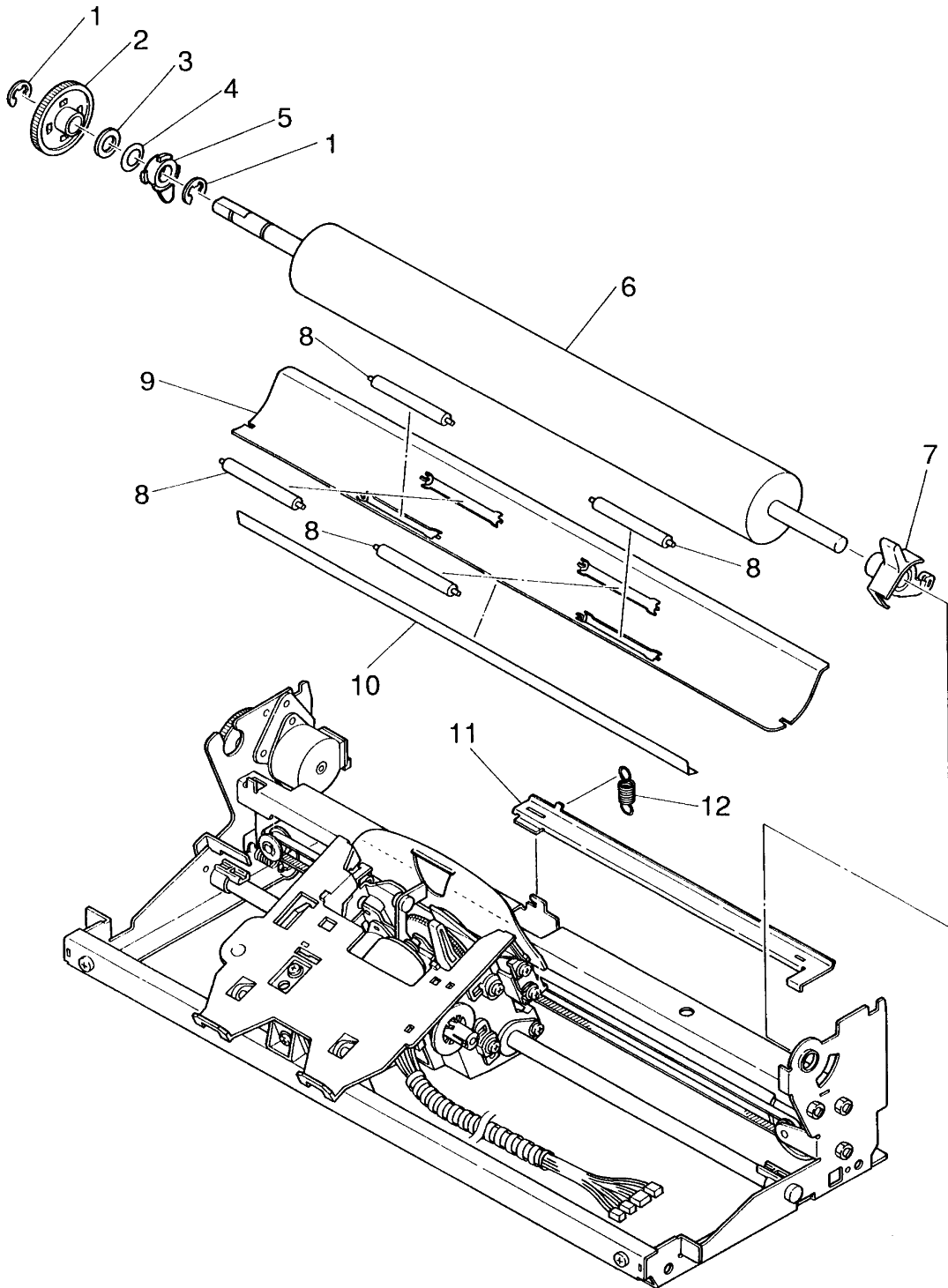
**FUNCTIONAL
GROUP NAME**

KEYBOARD

MODEL

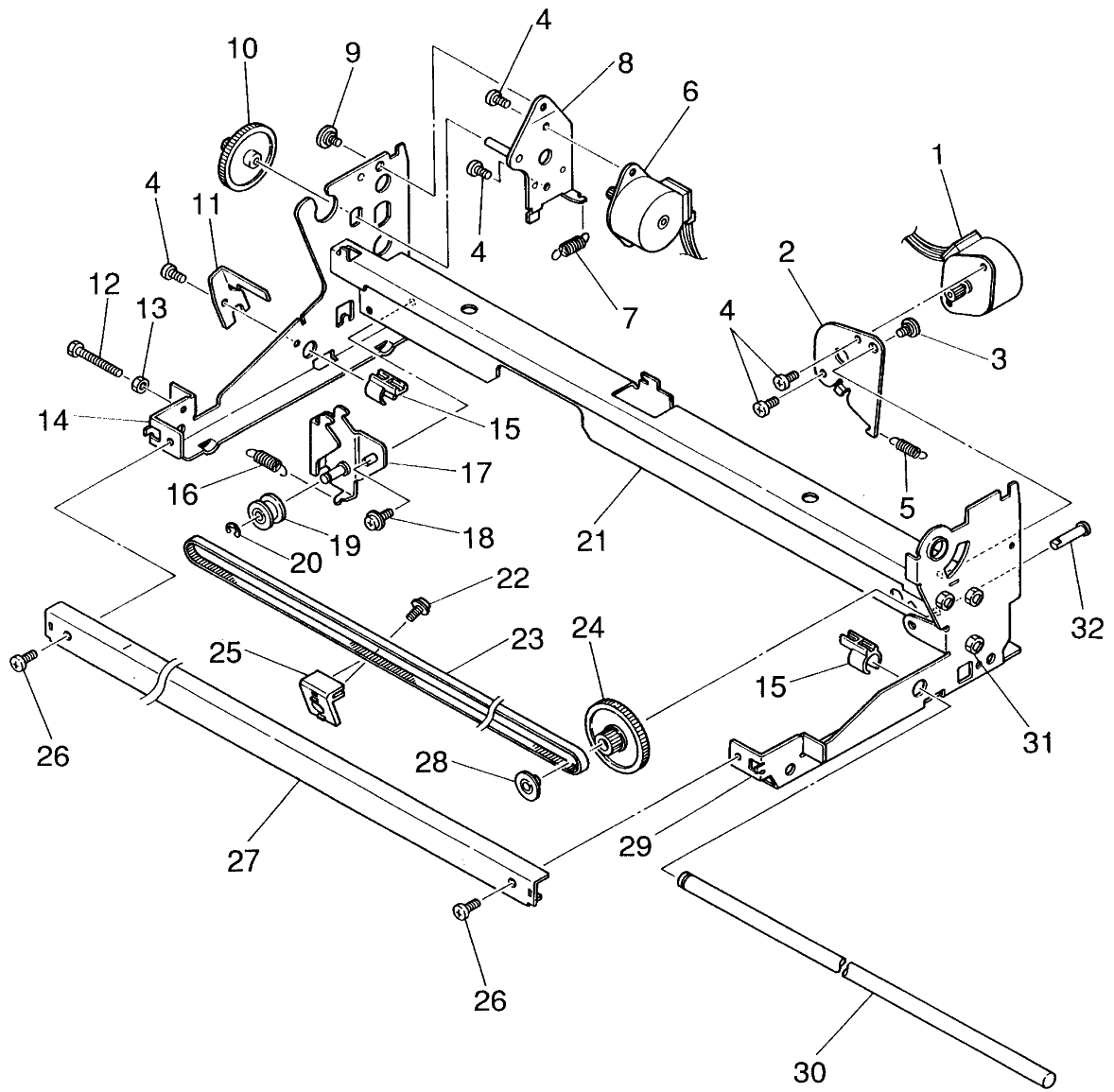
WPT150

REF. NO.	PART CODE	Q'TY	DESCRIPTION
1	150-41040	2	CRANK B
2	060-41060	62	CONTACT SPRING
3	060-41050	62	KEYTOP SPRING
4	150-41050	1	CRANK A
5	060-41070	1	SUB SPRING FOR SPACE BAR
6	150-41010	1	KEYBOARD PANEL
7	999-05707	1	LED (GREEN) SLR34MC (ROHM)
8	999-05640	1	LED (RED) SLR34VC3F (ROHM)
9	060-41040	2	LED CONTACT RUBBER
10	150-41030	1	MEMBRANE SHEET
11	680-00170	1	SCREW M3.0 X 6
12	150-41020	1	KEYBOARD SUPPORT PANEL
			KEYBOARD NO. LIST
13	KTC-31013-22	1 SET	USA
	KTC-31068-22	1 SET	HISPANO
	KTC-31074-22	1 SET	NEW CANADIAN-FRENCH



**FUNCTIONAL
GROUP NAME****PLATEN****MODEL****WPT150**

REF. NO.	PART CODE	Q'TY	DESCRIPTION
1	220-89110	2	RETAINING RING D=6
2	150-61230	1	PLATEN GEAR
3	C50-62310	1	PLATEN WASHER
4	C50-62050	1	PLATEN ARC WASHER
5	060-61220	1	PLATEN JOURNAL
6	150-61210	1	PLATEN
7	150-66010-45	1	PAPER RELEASE LEVER
8	060-61080	4	FEED ROLLER
9	150-61310	1	PAPER PAN
10	150-61320	1	DEFLECTOR SHEET
11	150-61050	1	PAPER RELEASE ARM
12	060-61070	1	PAPER RELEASE SPRING



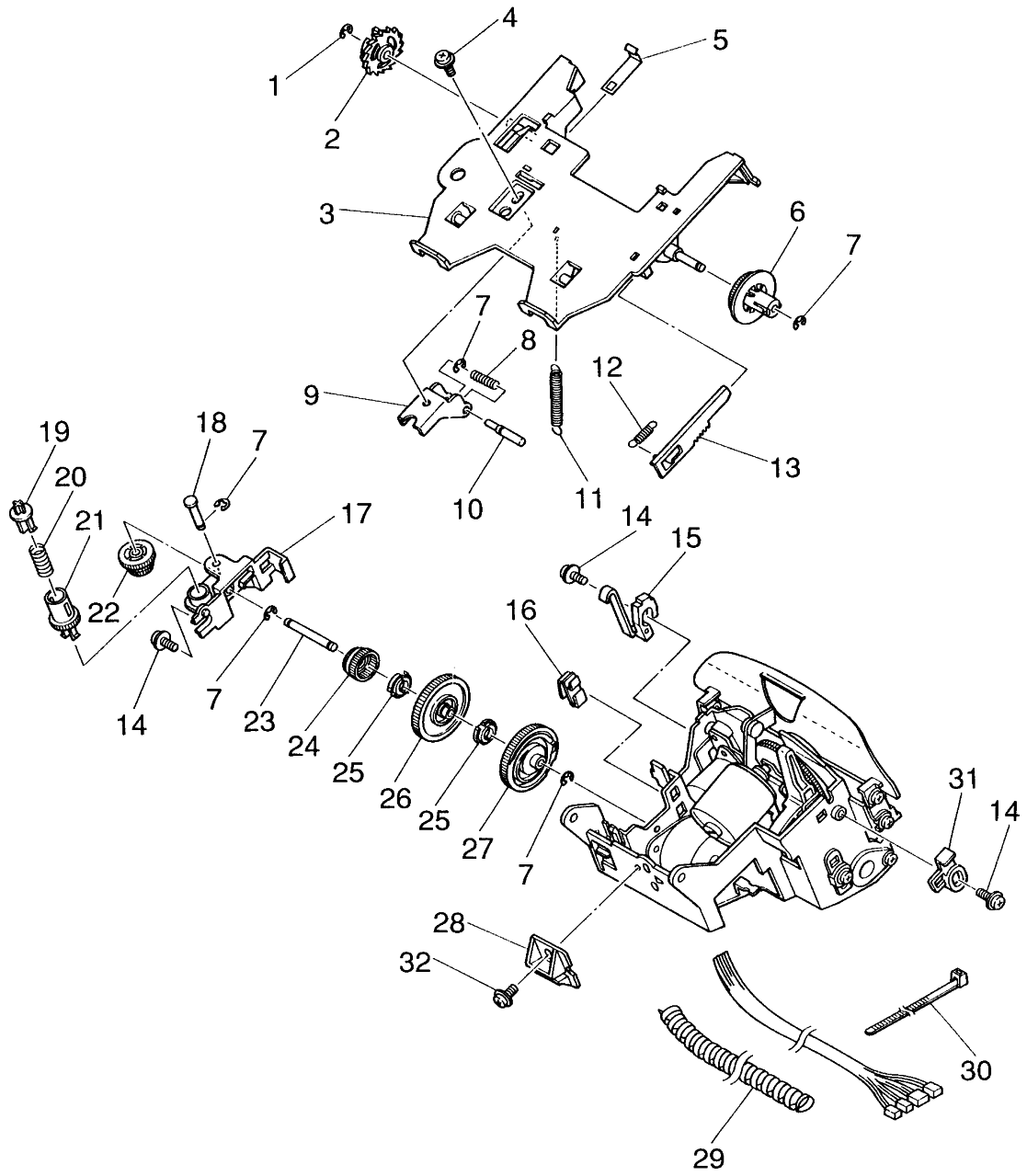
**FUNCTIONAL
GROUP NAME**

LF AND CARRIER DRIVE

MODEL

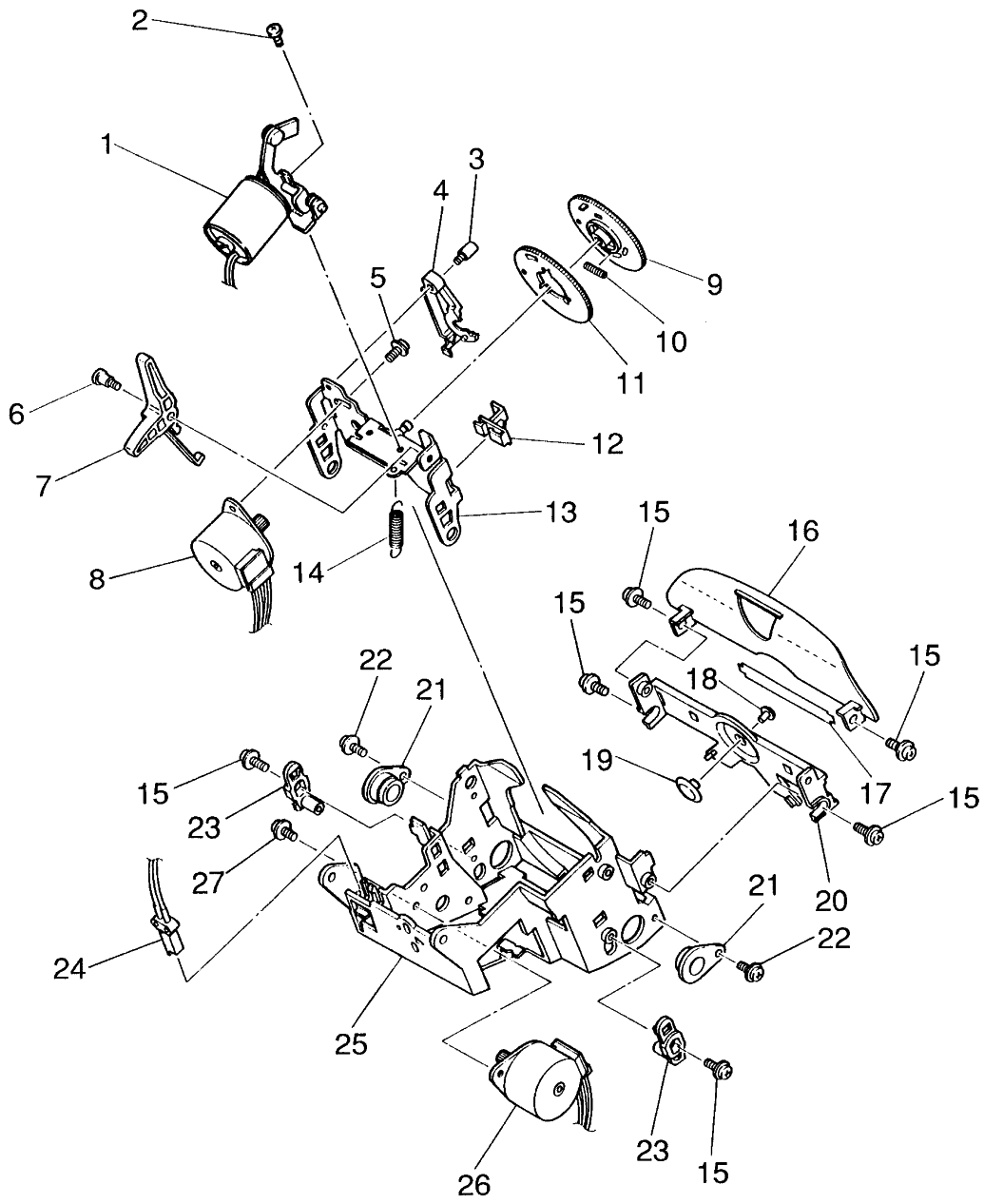
WPT150

REF. NO.	PART CODE	Q'TY	DESCRIPTION
1	150-61010	1	CARRIER MOTOR
2	150-61020	1	CARRIER MOTOR BRACKET
3	070-65071	1	CARRIER MOTOR BRACKET SCREW
4	011-00010	5	SCREW M3.0 X 4
5	150-61030	1	CARRIER MOTOR SPRING
6	150-63010	1	LF MOTOR
7	150-63020	1	LF MOTOR SPRING
8	150-63100	1	LF MOTOR PLATE
9	060-61090	1	LF MOTOR PLATE SCREW
10	060-61040	1	LF GEAR
11	150-60020	1	MAIN SHAFT BRACKET
12	150-62050	1	SCREW M3.0 X 30
13	011-03510	1	NUT M3.0
14	150-62020	1	SIDE FRAME (L)
15	150-60030	2	CARRIER STOPPER
16	150-61070	1	BELT TENSION SPRING
17	060-64100	1	IDLE PULLEY BRACKET
18	551-10040	1	SCREW M3.0 X 5
19	060-64010	1	IDLE PULLEY
20	011-02030	1	RETAINING RING D=2.5
21	150-62010	1	CENTER PLATE
22	581-86100	1	SCREW M3.0 X 6
23	150-61410	1	DRIVE BELT
24	150-61080	1	DRIVE PULLEY
25	150-61420	1	BELT CLAMP
26	011-00121	2	SCREW M4.0 X 6
27	150-62040	1	CARRIER GUIDE RAIL
28	060-61120	1	DRIVE PULLEY CAP
29	150-62030	1	SIDE FRAME (R)
30	150-60010	1	MAIN SHAFT
31	820-90420	6	NUT 4.0 X 7.0 X 3.2
32	060-61130	1	DRIVE PULLEY SHAFT



REF. NO.	FUNCTIONAL GROUP NAME PART CODE	CASSETTE BASE AND RIBBON DRIVE Q'TY	MODEL DESCRIPTION	WPT150
1	011-02030	1	RETAINING RING D=2.5	
2	330-52030	1	CORRECT FEED RATCHET	
3	150-56100	1	RIBBON CASSETTE BASE	
4	G00-81090	1	SCREW M3.0 X 5	
5	060-56610	1	CASSETTE HOLD SPRING	
6	060-56410	1	CORRECT TAPE HOLDER	
7	011-02020	5	RETAINING RING D=2	
8	150-56230	1	LIFT PIN SPRING	
9	150-56210	1	LIFT SLIDE PLATE	
10	150-56220	1	LIFT PIN	
11	060-50040	1	CASSETTE BASE SPRING	
12	150-56180	1	CORRECT BRAKE SPRING	
13	060-56420	1	CORRECT BRAKE RACK	
14	581-86100	3	SCREW M3.0 X 6	
15	150-51030	1	RATCHET HOOK	
16	150-51050	1	CAM STOPPER	
17	150-55210	1	GEAR HOLD BASE	
18	150-55230	1	RIBBON BEVEL GEAR PIN	
19	150-55260	1	RIBBON FEED PAWL	
20	150-55250	1	RIBBON FEED PAWL SPRING	
21	150-55240	1	RIBBON GEAR	
22	150-55220	1	RIBBON BEVEL GEAR	
23	150-55150	1	RIBBON DRIVE SHAFT	
24	150-55130	1	DRIVE BEVEL GEAR	
25	150-55140	2	DRIVE RATCHET	
26	150-55110	1	RIBBON DRIVE GEAR	
27	150-55120	1	CORRECT CAM	
28	150-51020	1	RAIL SLIDE	
29	060-50020	1	CARRIER CABLE GUIDE	
30	330-70550	1	UNIT BAND	
31	150-51040	1	RIBBON BASE STOPPER	
32	E08-10640	1	SCREW M3.0 X 8	
*	150-50000	1 SET	CARRIER	

*:CARRIER IS COMPOSED OF
CASSETTE BASE & RIBBON DRIVE
AND SELECTION & HAMMER.



**FUNCTIONAL
GROUP NAME**

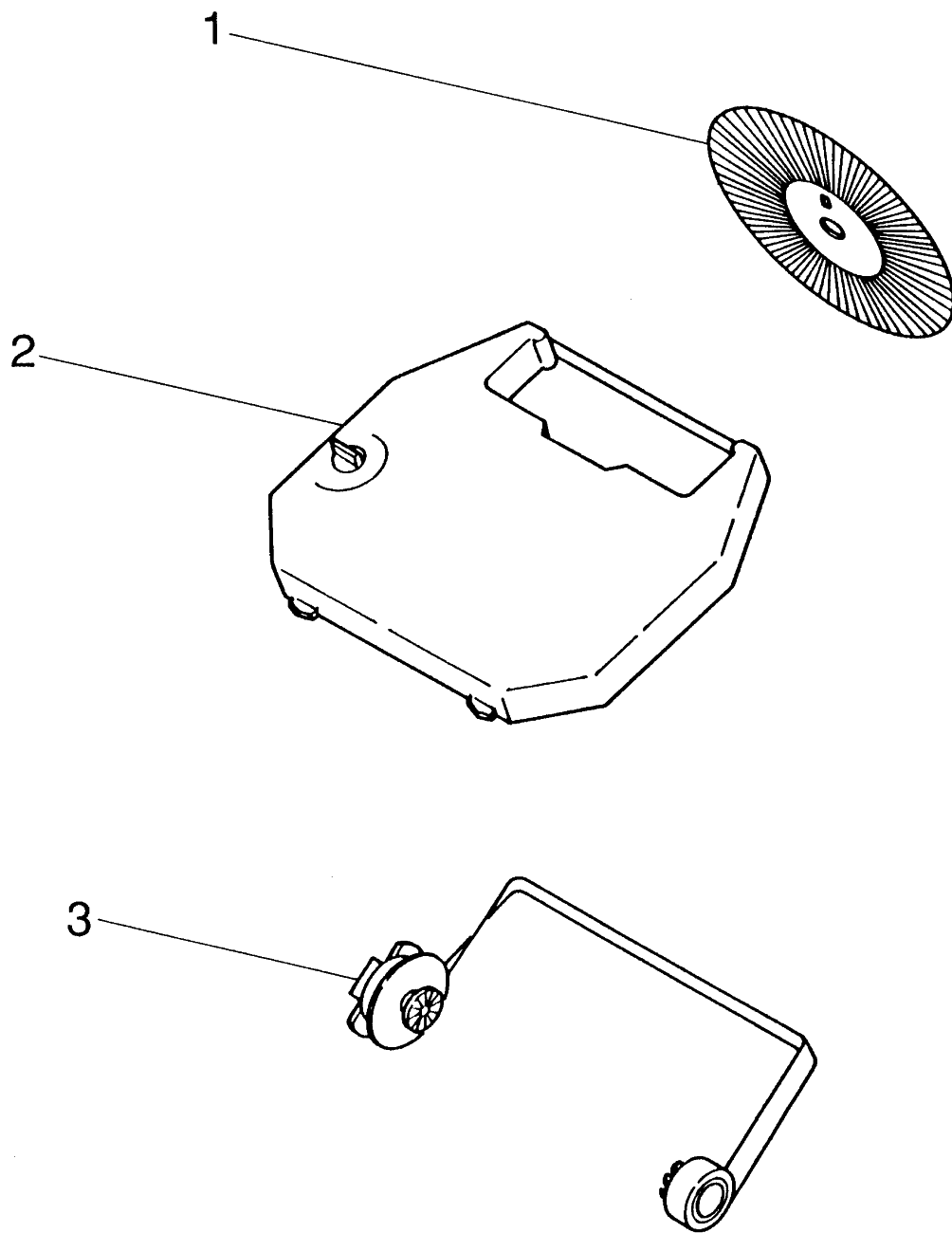
SELECTION AND HAMMER

MODEL

WPT150

REF. NO.	PART CODE	Q'TY	DESCRIPTION
1	150-54000	1	HAMMER SOLENOID
2	100-81010	2	SCREW M2.5 X 4
3	150-53451	1	WHEEL HOOK PIN (USED TO 150-53431)
4	150-53431	1	WHEEL SET HOOK (USED TO 150-53451)
5	551-10040	2	SCREW M3.0 X 5
6	150-53420	1	RELEASE PIN
7	150-53410	1	WHEEL RELEASE LEVER
8	150-53310	1	SELECTION MOTOR
9	150-53210	1	SELECTION GEAR A
10	150-53230	1	BACKLASH SPRING
11	150-53220	1	SELECTION GEAR B
12	150-53320	1	SELECTION GEAR STOPPER
13	150-53100	1	SELECTION PLATE
14	060-50030	1	WHEEL EJECT SPRING
15	581-86100	6	SCREW M3.0 X 6
16	150-52050	1	LINE LOCATOR
17	150-52020	1	FRONT PLATE SPRING
18	150-52040	1	PUSH DISK B
19	150-52030	1	PUSH DISK A
20	150-52010	1	FRONT PLATE
21	060-50010	2	CARRIER BRACKET
22	E08-10640	2	SCREW M3.0 X 8
23	150-51060	2	ADJUSTMENT PLATE
24	060-51401	1	LEAF SWITCH
25	150-51010	1	CARRIER BOX
26	150-51110	1	RIBBON MOTOR
27	G00-81090	2	SCREW M3.0 X 5
*	150-50000	1 SET	CARRIER

*:CARRIER IS COMPOSED OF
CASSETTE & RIBBON DRIVE
AND SELECTION & HAMMER.



**FUNCTIONAL
GROUP NAME**

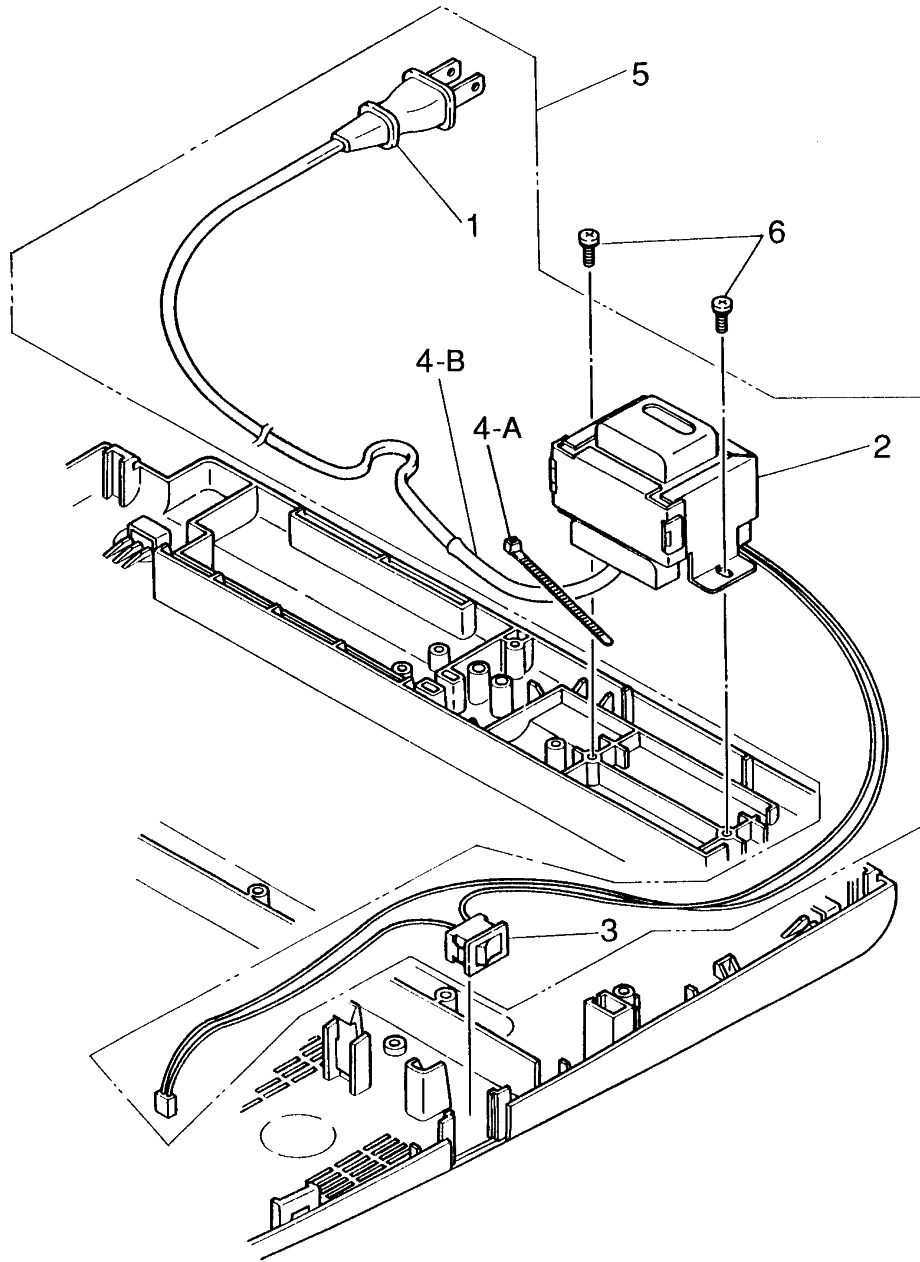
ACCESSORIES

MODEL

WPT150

REF. NO.	PART CODE	Q'TY	DESCRIPTION
1	*	1	PRINTWHEEL
2	100-75206	1	CORRECTABLE RIBBON CASSETTE
3	330-75105-00-FL	1	LIFT-OFF CORRECTION TAPE

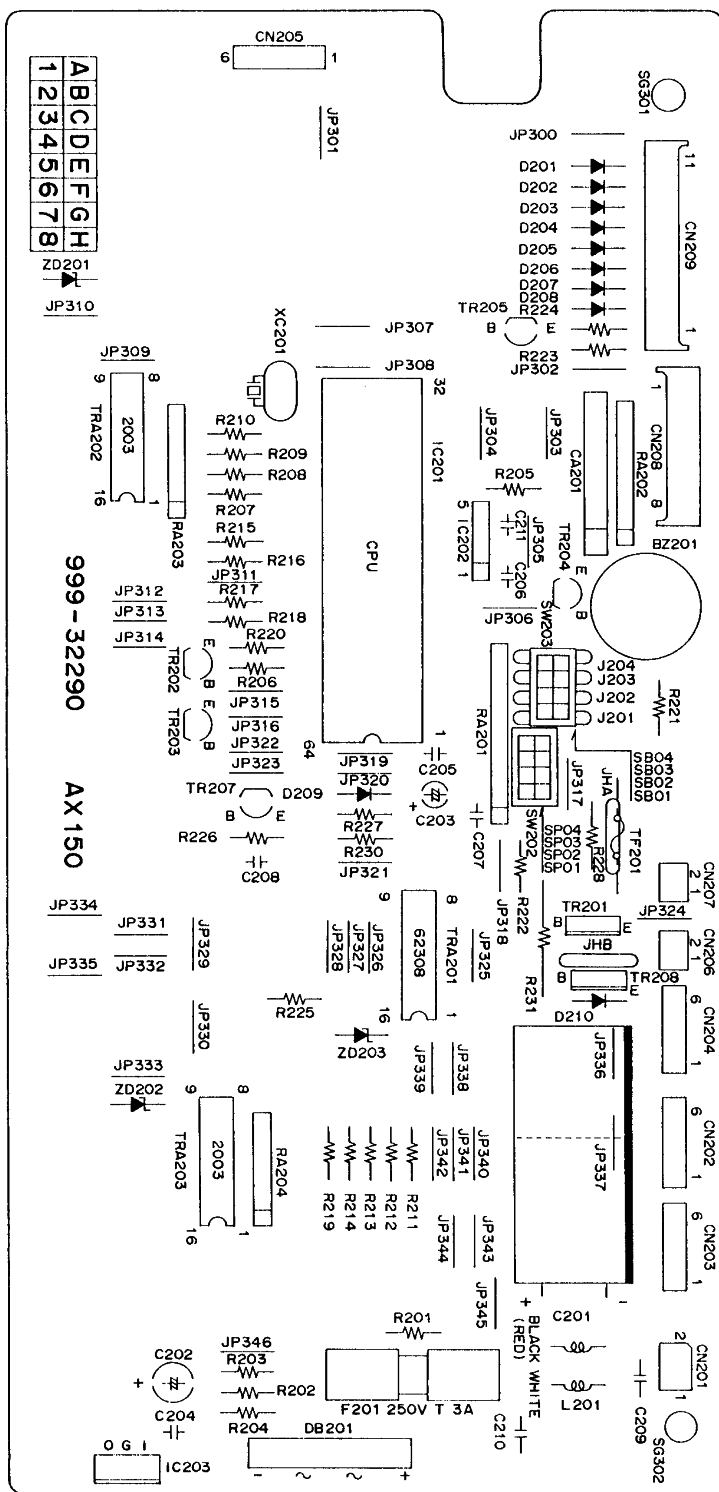
*:PARTS WHICH HAVE THE PART
CODE PRINTED ON THE PART, OR
SEPARATELY INFORMED.



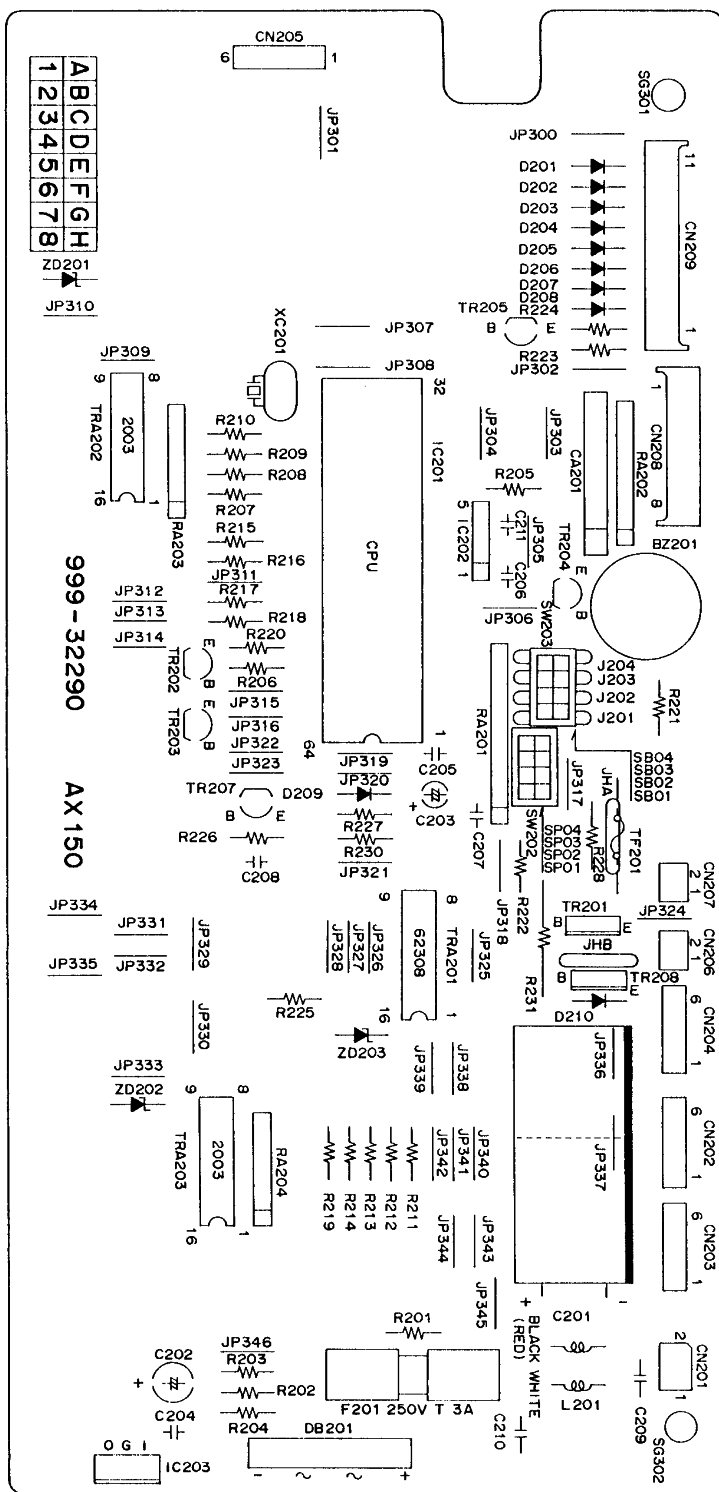
**FUNCTIONAL
GROUP NAME****POWER SUPPLY****MODEL****WPT150**

REF. NO.	PART CODE	Q'TY	DESCRIPTION
1	060-15610	1	POWER SUPPLY CORD FOR UL/CSA
2	150-11020	1	TRANSFORMER (120V)
3	150-11110	1	POWER SWITCH
4	150-18000	1	CORD TUBE (120V)
5	150-12000	1	POWER SUPPLY FOR UL/CSA
6	150-71010	2	SCREW M4.0 X 10

	FUNCTIONAL GROUP NAME	CONTROL PCB (MASK CPU MODELS)	MODEL	WPT150
REF. NO.	PART CODE	Q'TY	DESCRIPTION	
ASS'Y	150-22100	1 SET	CONTROL PCB ASSEMBLY (A-1) FOR MASK CPU MODELS	
	150-22200	1 SET	CONTROL PCB ASSEMBLY (B-1) FOR MASK CPU MODELS	
PCB	999-32290	1	CONTROL PCB FOR MASK CPU MODELS	
IC201	999-14020	1	MASK CPU FOR A-1 TMP91C640N-2345 (TOSHIBA)	
	999-14010	1	MASK CPU FOR B-1 TMP90CM40N-2652 (TOSHIBA)	
IC202	999-04015	1	RESET IC M51953BL (MITSUBISHI)	
IC203	999-04009-00-30	1	REGULATOR IC TA7805S (TOSHIBA)	
	999-04009	1	REGULATOR IC L7805CP (SGS-THOMSON)	
DB201	999-02955	1	DIODE BRIDGE D3SBA20 (SHINDENGEN)	
D201-209	998-05450	9	DIODE 1S2076A TD (HITACHI)	
D210	330-30310-00-37	1	DIODE 1SR139-200 (ROHM)	
ZD201-203	220-32100	3	ZENER DIODE HZ27-1 (HITACHI)	
TR201	998-11110	1	TRANSISTOR 2SC3786 (SANYO)	
TR202	998-05320	1	TRANSISTOR 2SA1318 (SANYO)	
TR203-205, 207	999-03233-00-12	4	TRANSISTOR 2SC3656 (SANYO)	
TR208	999-03240	1	TRANSISTOR 2SB1272 (ROHM)	
	999-03258	1	TRANSISTOR 2SB1149 (NEC)	
TRA201	999-03412-00-20	1	TRANSISTOR ARRAY M5248P (MITSUBISHI)	
TRA202,203	998-11120	2	TRANSISTOR ARRAY ULN2003A (SANKEN)	
		2	TRANSISTOR ARRAY KID65003AP (KEC)	
XC201	998-46190	1	CERAMIC RESONATOR CSTLS10M0G53-B0 (MURATA)	
BZ201	999-05541-00-10	1	BUZZER PS1740PO2 (TDK)	



REF. NO.	FUNCTIONAL GROUP NAME PART CODE	CONTROL PCB (MASK CPU MODELS) Q'TY	MODEL WPT150 DESCRIPTION
C201	998-11840	1	CAPACITOR 6800UF 35V
C202	999-02790-00-30	1	CAPACITOR 47UF 10V
C203	999-02791-00-30	1	CAPACITOR 10UF 10V
C204-206	999-12502-00-MU	3	CAPACITOR 47000PF 25V
C207,208	999-02533-00-MU	2	CAPACITOR 220PF 25V
C211	999-12540-00-MU	1	CAPACITOR 0.22UF 50V
CA201	999-02794-00-MU	1	CAPACITOR ARRAY 560PF X 8 50V
R201	330-22300-00-TA	1	RESISTER 2.2KOHM 1/4W
R202-204	998-11850	3	RESISTOR 430OHM 1/2W
R205,220, 230	340-30481-00-TA	3	RESISTER 5.1KOHM 1/4W
R206,221	650-31160-00-TA	2	RESISTOR 3.3KOHM 1/4W
R207-218	330-22370-00-TA	12	RESISTOR 220OHM 1/4W
R219	999-00122-00-TA	1	RESISTER 1.2KOHM 1/4W
R222,227	650-31170-00-TA	2	RESISTOR 100OHM 1/4W
R223,224	330-30530-00-TA	2	RESISTER 330OHM 1/4W
R225	999-02199	1	RESISTOR 11KOHM 1/4W
R226	999-12024	1	RESISTOR 2.7KOHM 1/4W
RA201	998-11350	1	RESISTOR ARRAY 10KOHM X10 1/8W
RA202	650-31260	1	RESISTOR ARRAY 10KOHM X 8 1/8W
RA203,204	998-11360	2	RESISTOR ARRAY 4.7KOHM X6 1/8W
CN201	220-31290	1	CONNECTOR 2 PINS
CN202,205	998-11150	2	CONNECTOR 6 PINS
CN203	998-11160	1	CONNECTOR 6 PINS (RED)
CN204	998-11170	1	CONNECTOR 6 PINS (YELLOW)
CN206	999-04719	1	CONNECTOR 2 PINS (RED)
CN207	999-04728	1	CONNECTOR 2 PINS
CN208	999-04780	1	CONNECTOR 8 PINS
CN209	999-04779	1	CONNECTOR 11 PINS
SW202	998-11220	1	SHORT BAR 8 PINS
SP01-SP04	998-05090	1	SHORT BAR SOCKET
SW203	998-11220	1	SHORT BAR 8 PINS
SB01-SB04	998-05090	4	SHORT BAR SOCKET
F201	998-09330	1	FUSE 3.0A 250V
	998-17480	1	FUSE 3.0A 250V
FOR F201	220-32280	2	FUSE CLIP
L201	998-11750	1	CHOCK COIL 2943-002402 (OZEKI)
FOR IC209, DB201	150-21051	1	COOLING PLATE
	150-21090	2	SCREW M3.0 X 8
	011-00100	2	SCREW M3.0 X 6



INTERNATIONAL CHARACTER SET

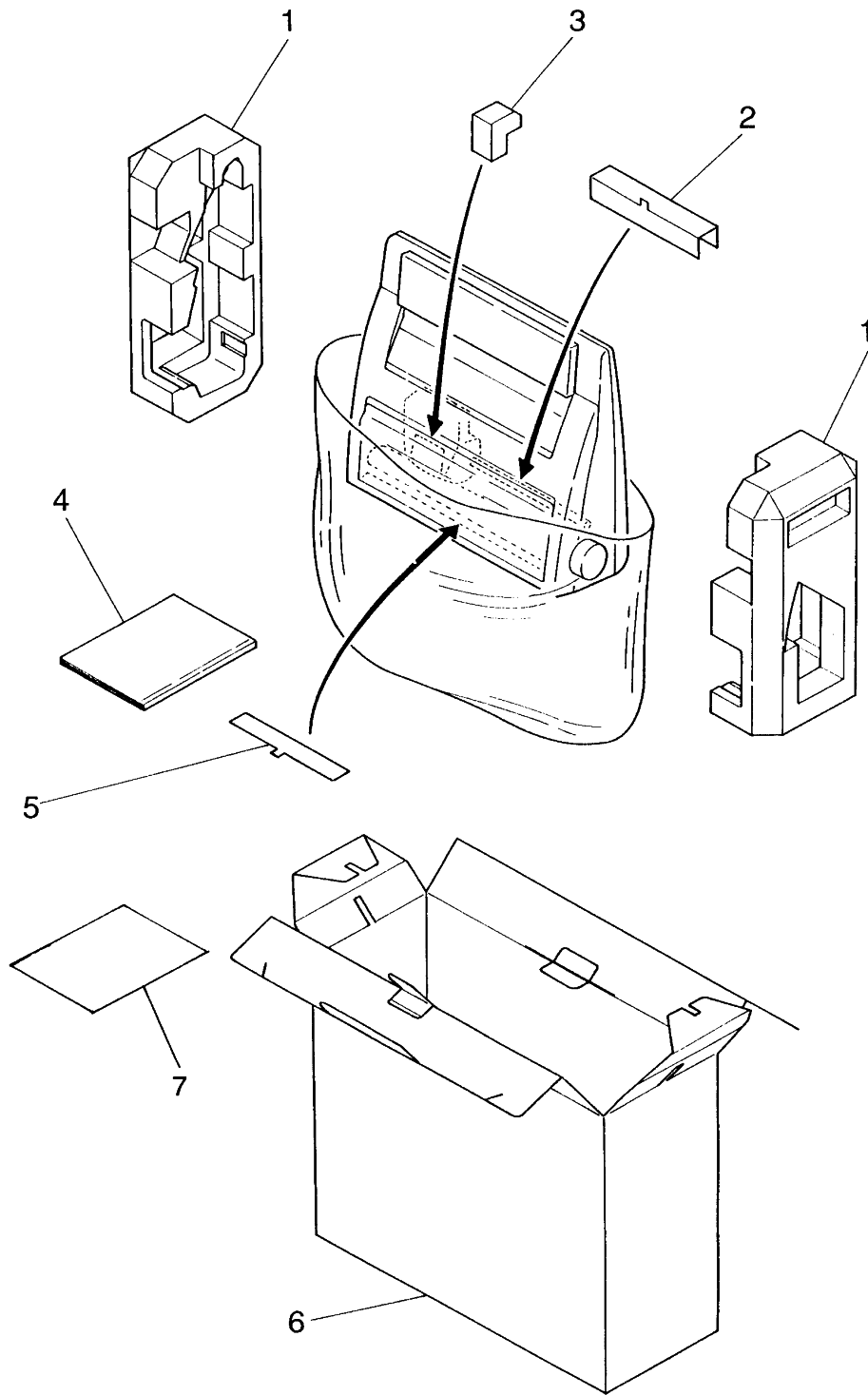
THE FOLLOWING TABLE SHOWS HOW CHARACTER SETS ARE DETERMINED BY COMBINATIONS OF SHORT PINS (SB01 - SB04) THAT ARE INSTALLED ON THE CONTROL PCB.

A-1 (CONTROL PCB ASSEMBLY NO.:150-22100, CPU NO.:999-14020)

COUNTRY	SB01	SB02	SB03	SB04	Q'TY
GERMAN/2	NO	NO	NO	NO	0
AMERICAN	YES	NO	NO	NO	1

B-1 (CONTROL PCB ASSEMBLY NO.:150-22200, CPU NO.:999-14010)

COUNTRY	SB01	SB02	SB03	SB04	Q'TY
GERMAN/2	NO	NO	NO	NO	0
AMERICAN	YES	NO	NO	NO	1
NEW SPANISH/2/3	NO	YES	NO	NO	1
DANISH/2	YES	YES	NO	NO	2
FINISH SWEDISH/2	NO	NO	YES	NO	1
HISPANO/3	YES	NO	YES	NO	2
BRAZILIAN	NO	YES	YES	NO	2
PORTUGUESE/2	YES	YES	YES	NO	3
FRENCH	NO	NO	NO	YES	1
DUTCH	YES	NO	NO	YES	2
ENGLISH	NO	YES	NO	YES	2
SWISS GERMAN/2	YES	YES	NO	YES	3
ITALIAN/2	NO	NO	YES	YES	2
SWISS FRENCH/2	YES	NO	YES	YES	3
CANADIAN FRENCH	NO	YES	YES	YES	3
NEW CANADIAN-FRENCH	YES	YES	YES	YES	4



	FUNCTIONAL GROUP NAME	PACKING	MODEL	WPT150
REF. NO.	PART CODE	Q'TY	DESCRIPTION	
1	001-93402	1	SIDE PACKING SET	
2	150-80040	1	CARRIER PROTECTOR	
3	150-80030	1	RIBBON CASSETTE PACKING	
4	001-02496	1	INSTRUCTION MANUAL (ENGLISH)	
	001-02497	1	INSTRUCTION MANUAL (FRENCH/SPANISH/GERMAN)	
5	150-81040	1	PLATEN PACKING	
6	001-62294	1	CARTON BOX	
7	001-02573	1	WARRANTY SHEET	

Printed in Japan
001-03154-02
041130
AX-150NU